

Juho Saari, Professor, Welfare sociology, Director, The University of Eastern Finland,  
Tieteiden talo, 22.9.2011

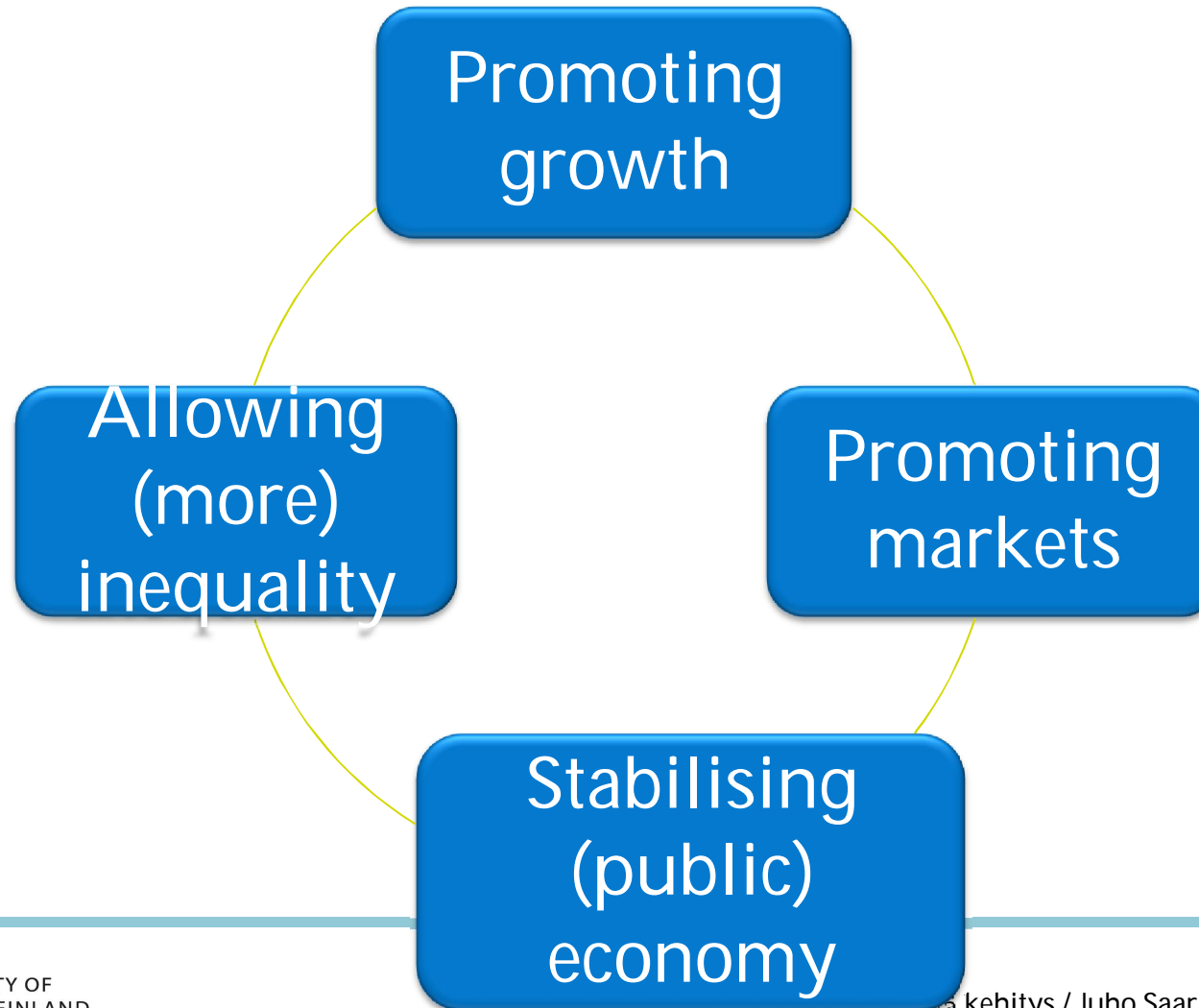
# WELL-BEING (SWB), ECONOMY AND POLITICS – A NECESSARY STEP OR ONE BRIDGE TOO FAR?



UNIVERSITY OF  
EASTERN FINLAND

---

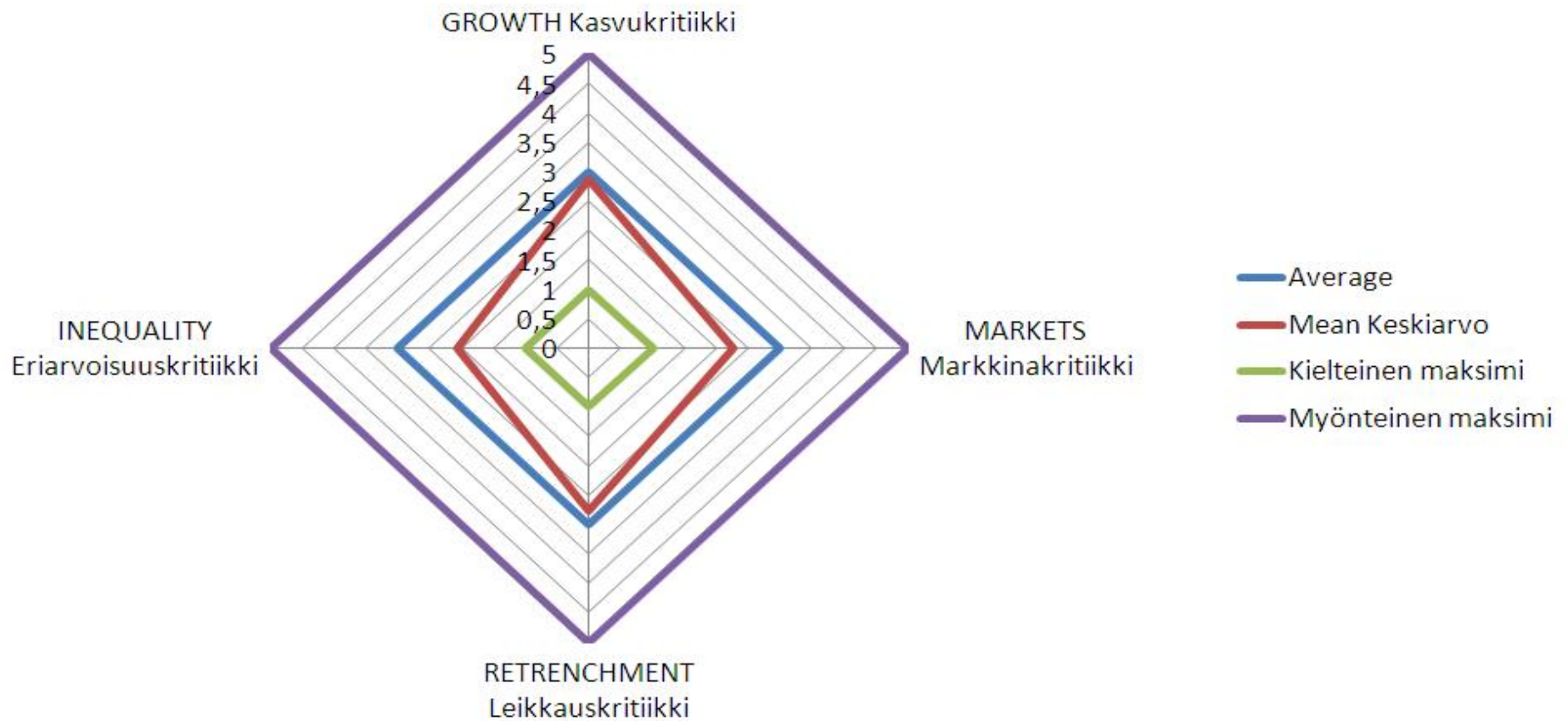
# The pillars of public policy in post recession (1991-1994) Finland



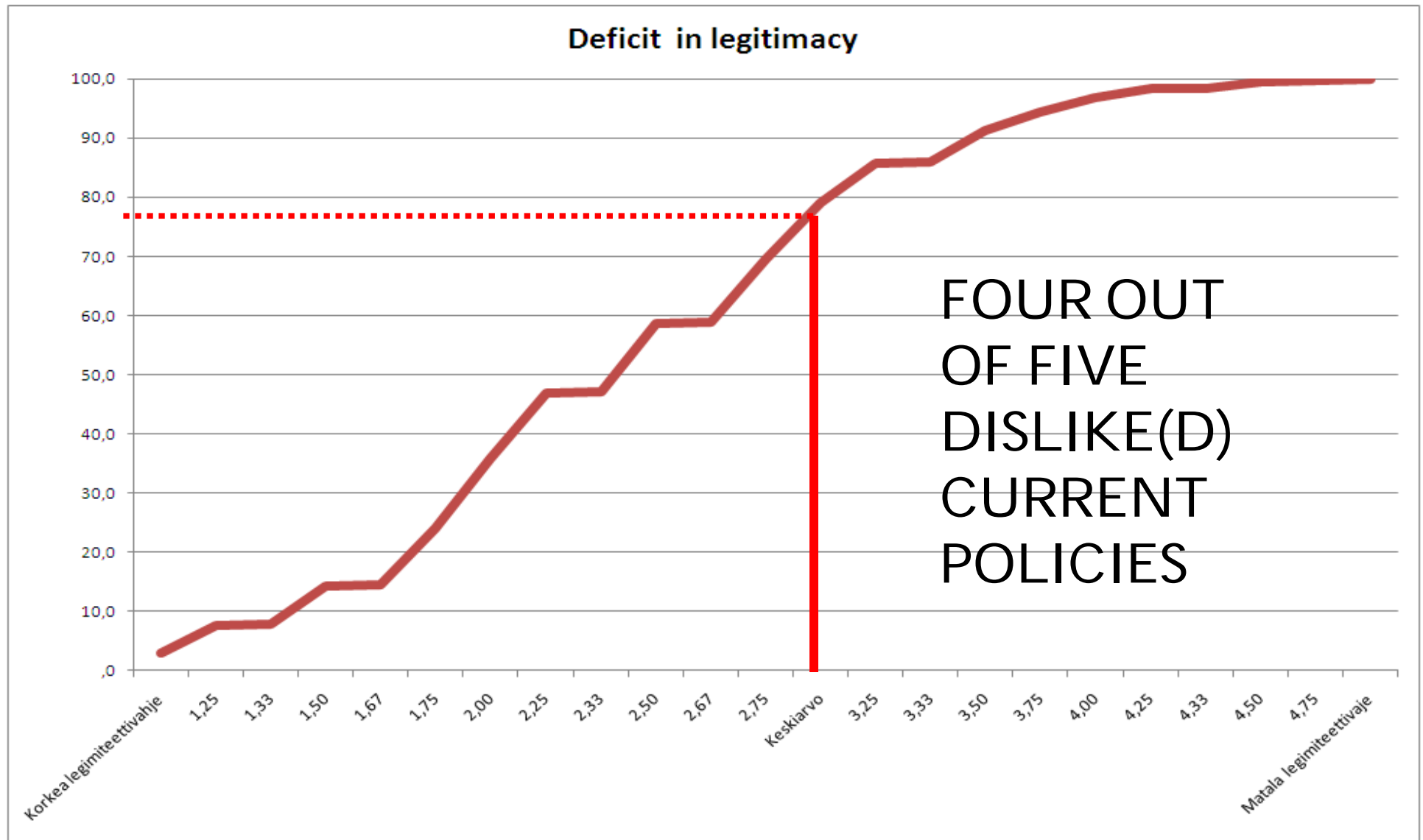
# WE HAVE NOT BEEN DOING TOO BADLY, HOWEVER ...

Prosperity Index (2009)	Competitiveness Index (2010)	Sustainable society index (2010)	Newsweek Index (2010)
<b>SUOMI</b>	Sveitsi	Sveitsi	<b>SUOMI</b>
Sveitsi	<u>Ruotsi</u>	<u>Ruotsi</u>	Sveitsi
<u>Ruotsi</u>	Singapore	Itävalta	<u>Ruotsi</u>
<u>Tanska</u>	Yhdysvallat	<u>Norja</u>	Australia
<u>Norja</u>	Saksa	<b>SUOMI</b>	Luxembourg
Australia	Japani	Latvia	<u>Norja</u>
Kanada	<b>SUOMI</b>	Uusi-Seelanti	Kanada
Alankomaat	Alankomaat	Slovenia	Alankomaat
Yhdysvallat	<u>Tanska</u>	Luxembourg	Japani
Uusi-Seelanti	Kanada	<u>Tanska</u>	<u>Tanska</u>
Irlanti	Hong Kong	Viro	Yhdysvallat
Iso-Britannia	Iso-Britannia	Saksa	Saksa
Belgia	Taiwan	Valko-Venäjä	Uusi-Seelanti
Saksa	<u>Norja</u>	Unkari	Iso-Britannia
Itävalta	Ranska	Ranska	Etelä-Korea
104	139	151	100

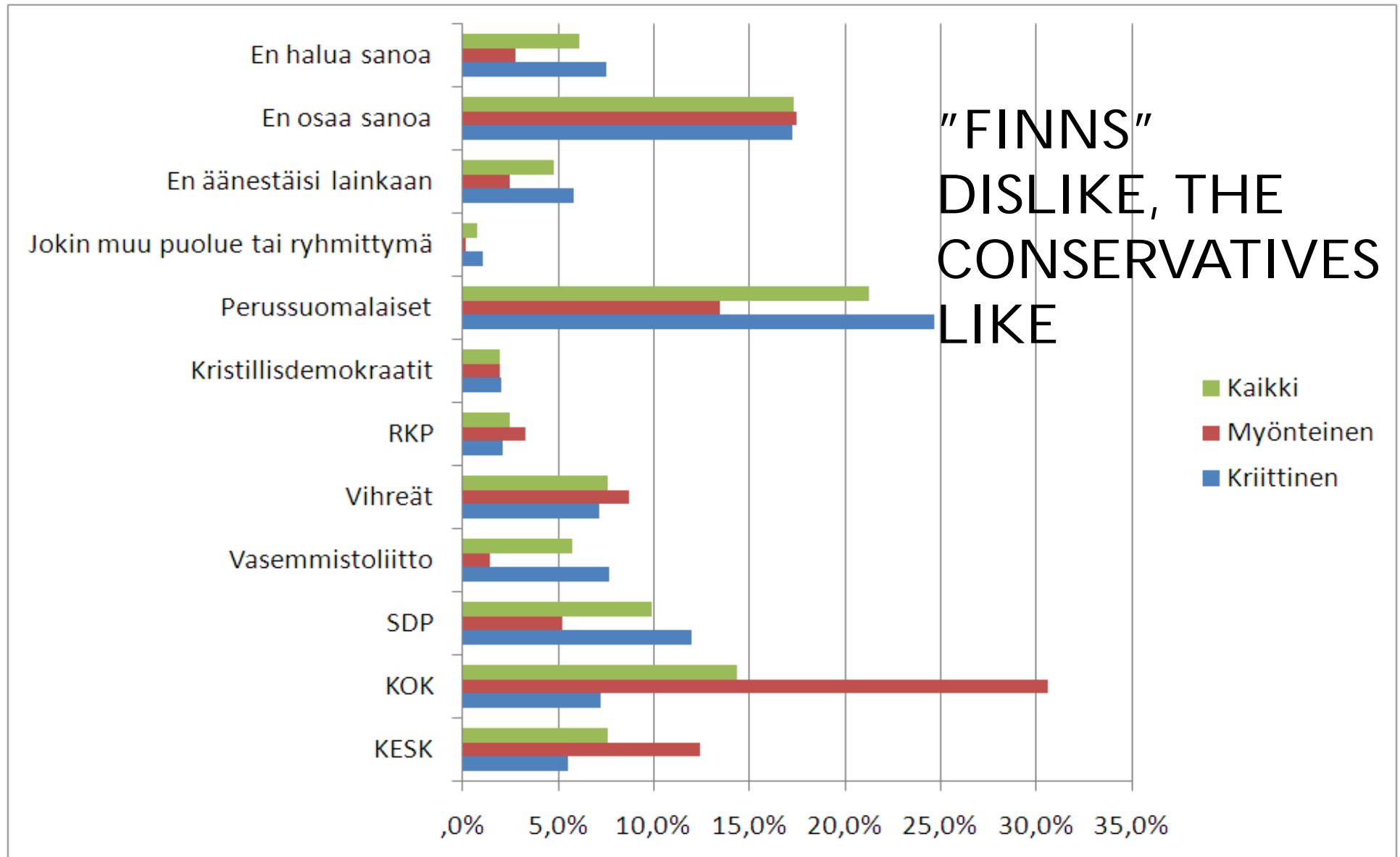
... BUT THE CITIZENS DISLIKE THESE POLICIES –  
if the questions are framed in certain ways (3/11 N=1908)



# Legitimacy deficit (sum variable, Crombach satisfied)



# Political support and criticism (3/2011)



---

## PUZZLE?

- Citizens are not too satisfied with current policies – Something wrong with citizens?
- There is a significant deficit in legitimacy (take account the frame)
- As significant as the public deficit we are so worry about?
- Is there any way to reform the policies in ways that reduce the deficit – and make people happier?

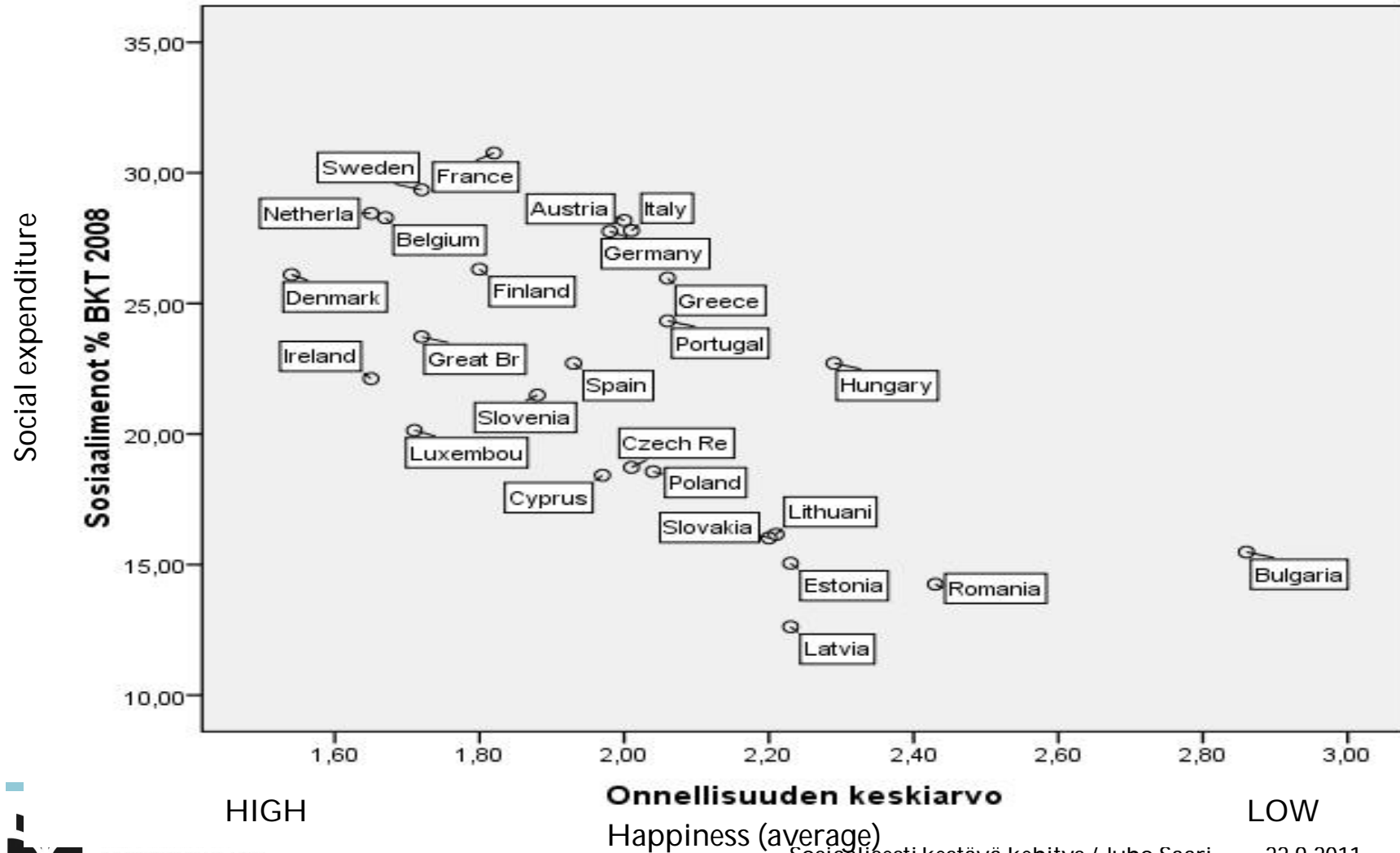
---

# THE PROPOSAL

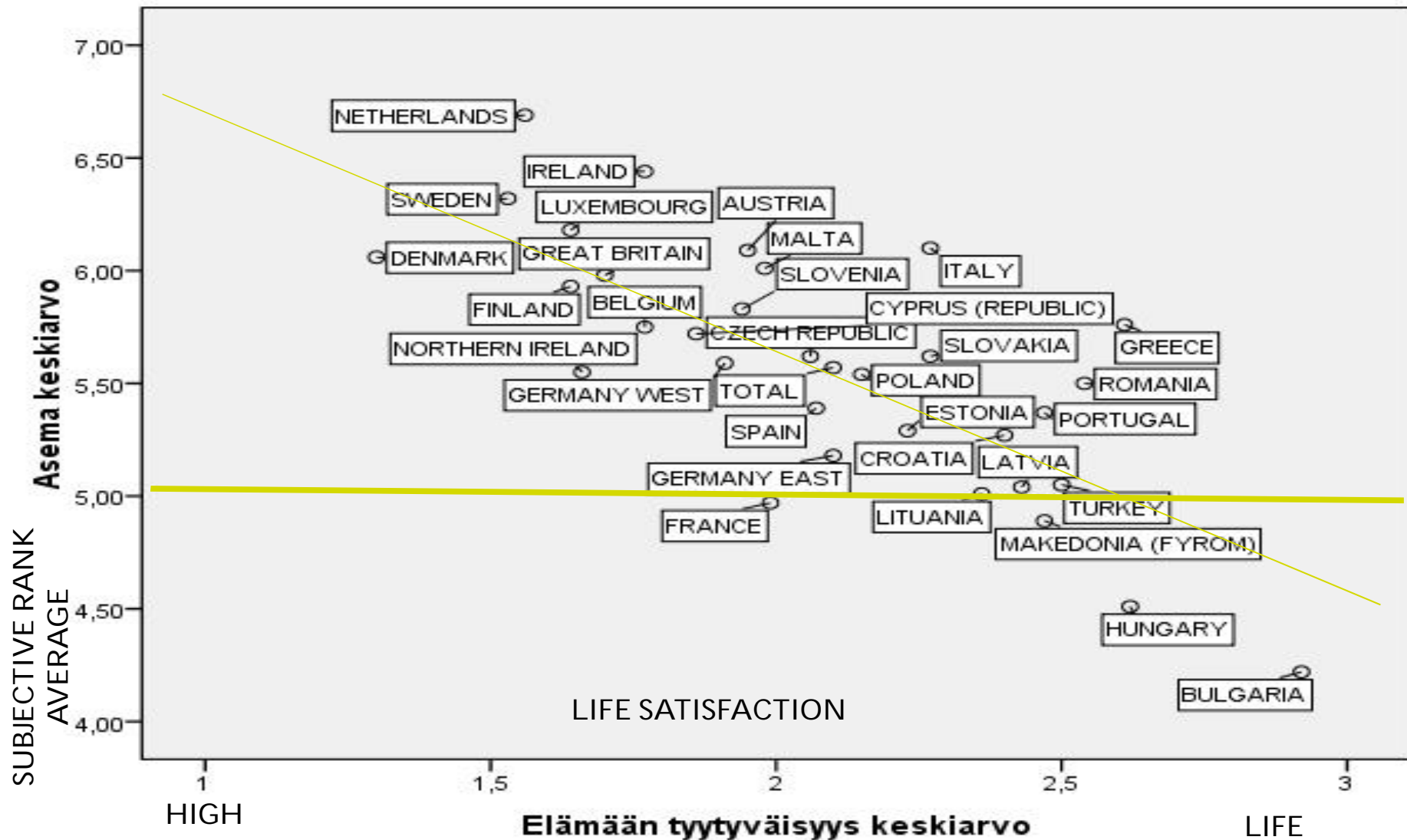
- Socially sustainable policies should have *two key well-being components*.
- The strong focus on narrowing inequalities in resources distribution and the interplay between the welfare state and *socio-economic groups*.
- More focus on subjective well-being, especially its averages but also to those groups experiencing exceptionally low levels.
- What is the SOCIAL MECHANISM that can simultaneously promote equalities in resources and the high levels of happiness / satisfaction.

# Welfare state and happiness

(yes, I know now there is a problem)

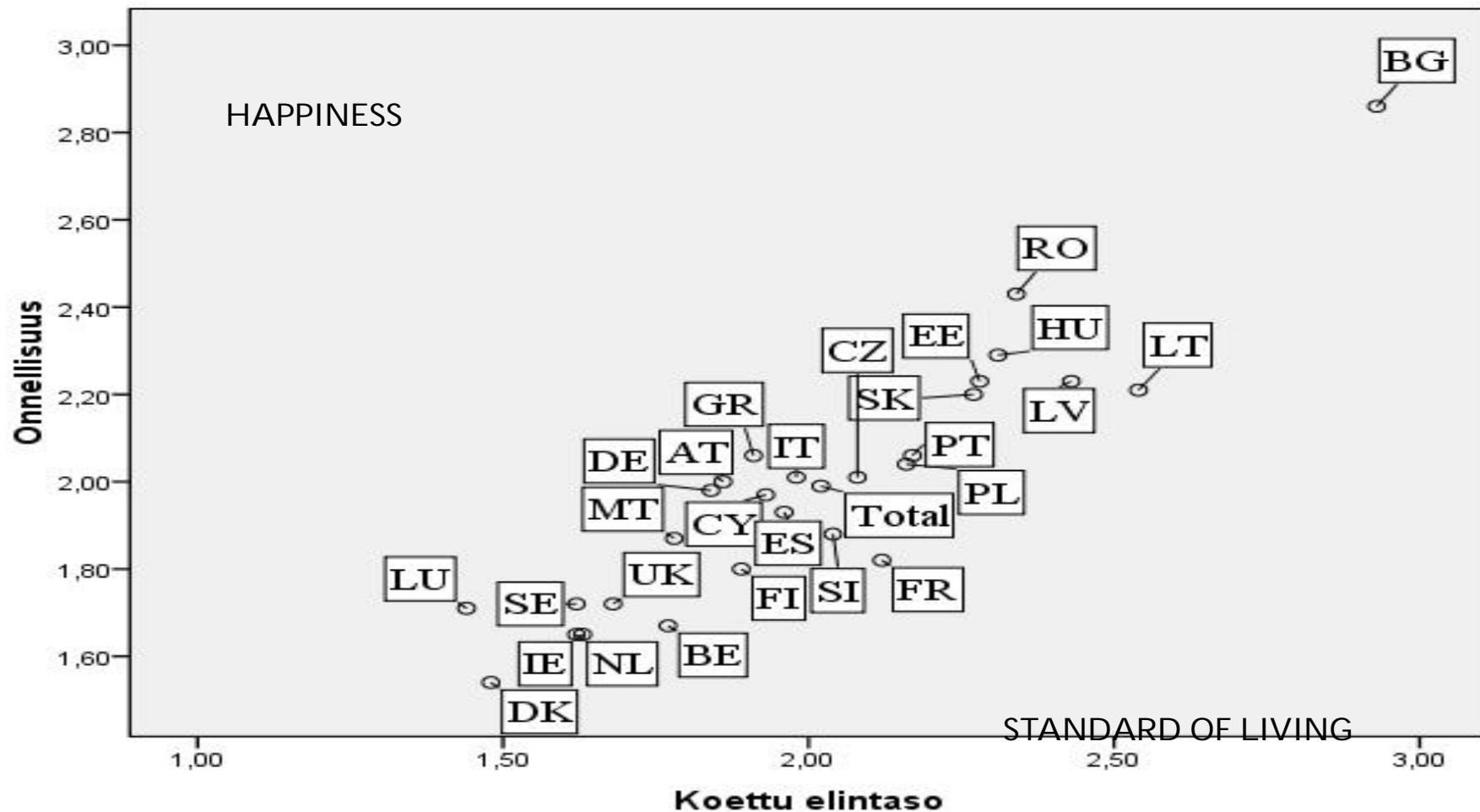


# Should we fool us more (like the Dutch do)? – DOES EQUALITY HELP (in fooling ourselves)?

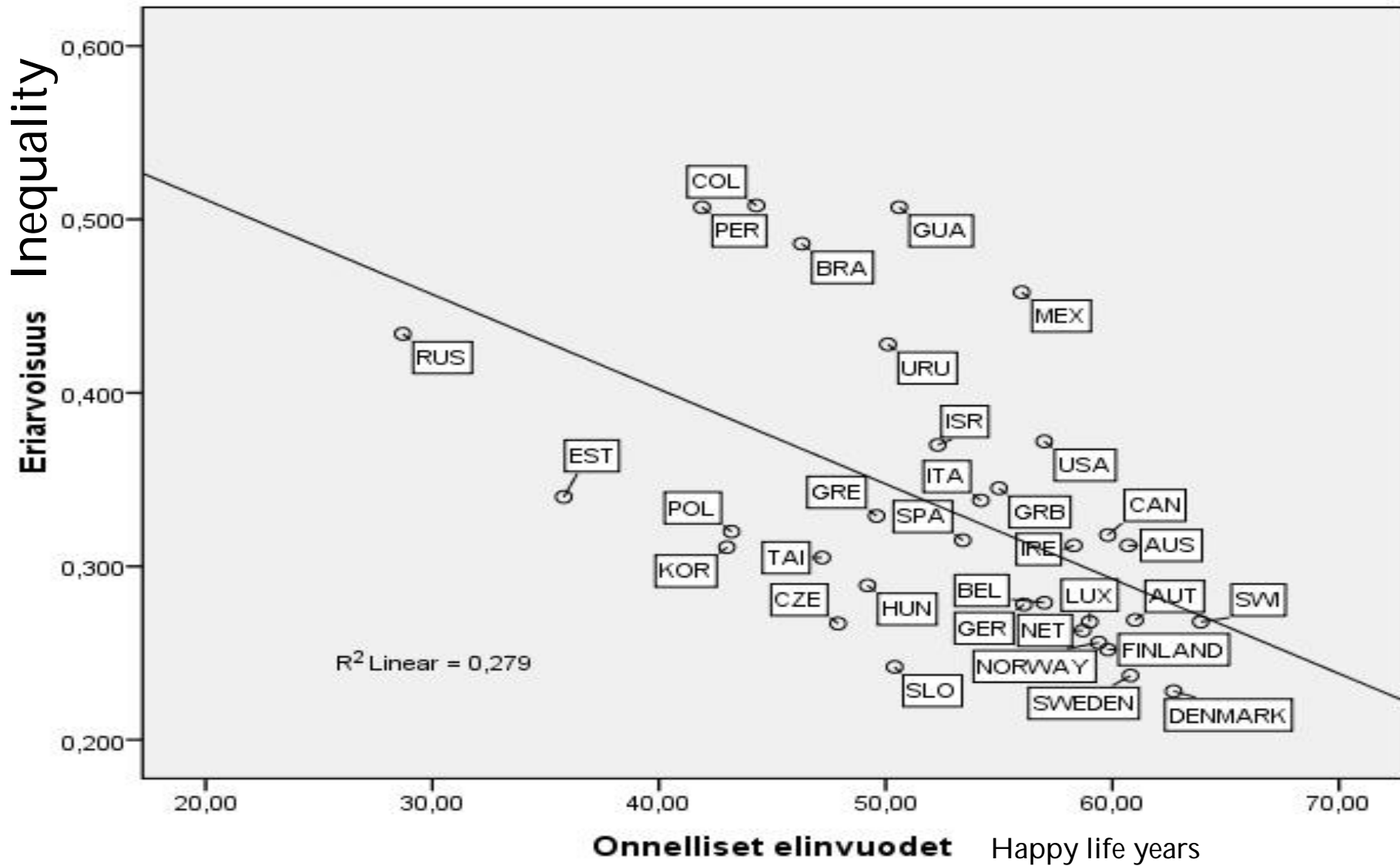


---

Standard of living and happiness – not so much inequality but the resources and costs ....

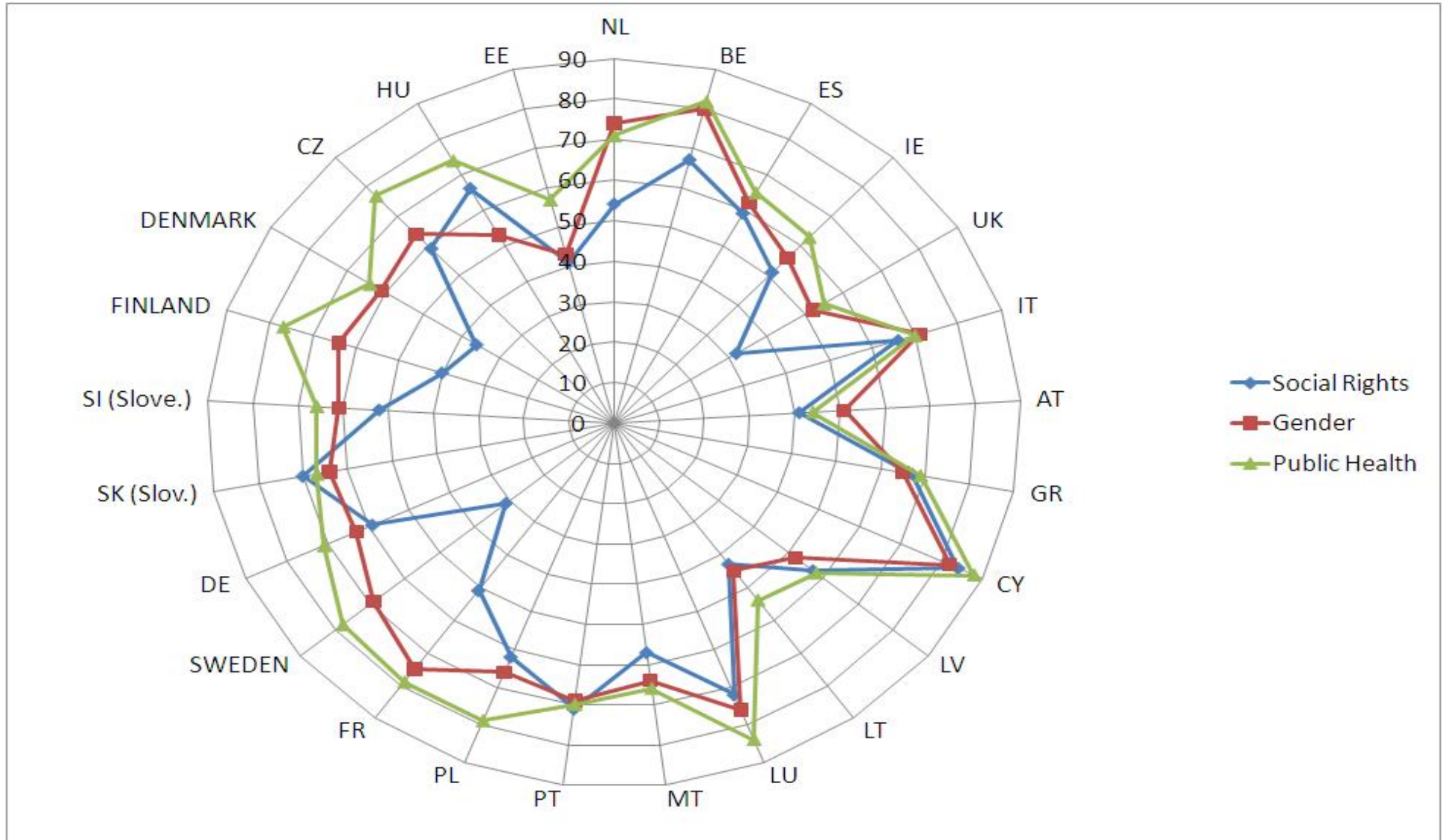


# The Veenhoven solution?



---

# SHOULD THE EU INTERVENE – PERHAPS NO, BUT IT WILL.



---

Where to go in order to promote (greater) happiness through public policies (in countries like Finland)

- Positive expectations => Employment
- Scarcity factor => Equality (in that sense)
- Balanced use of time => Family, work, commuting
- Voluntary work => Organised civil society
- Trust => Long term commitments in welfare states in particular to pensions, health care and all that

---

# BRIDGING POLITICS and RESEARCH in WELL-BEING

- Current situation is not too bad – there exist structures for co-operation and we have the wealth of data.
- It is probably getting better – if HYMY-recommendations will be implemented
- There is some interest among politicians (inc. PM Katainen, who used that in 2/2011 at Parliamentary debate, talking on “real well-being”, and the Greens) but some serious resistance among civil servants and policy-makers.
- Statistics Finland not too happy with it without getting additional resources, which is very unlikely.
- Concrete case in Social Services Act – customer’s satisfaction and the Quality of Working Life – Work satisfaction.

*Questions and debate?*



UNIVERSITY OF  
EASTERN FINLAND

*[www.uef.fi](http://www.uef.fi)*