



GÖTEBORGS UNIVERSITET

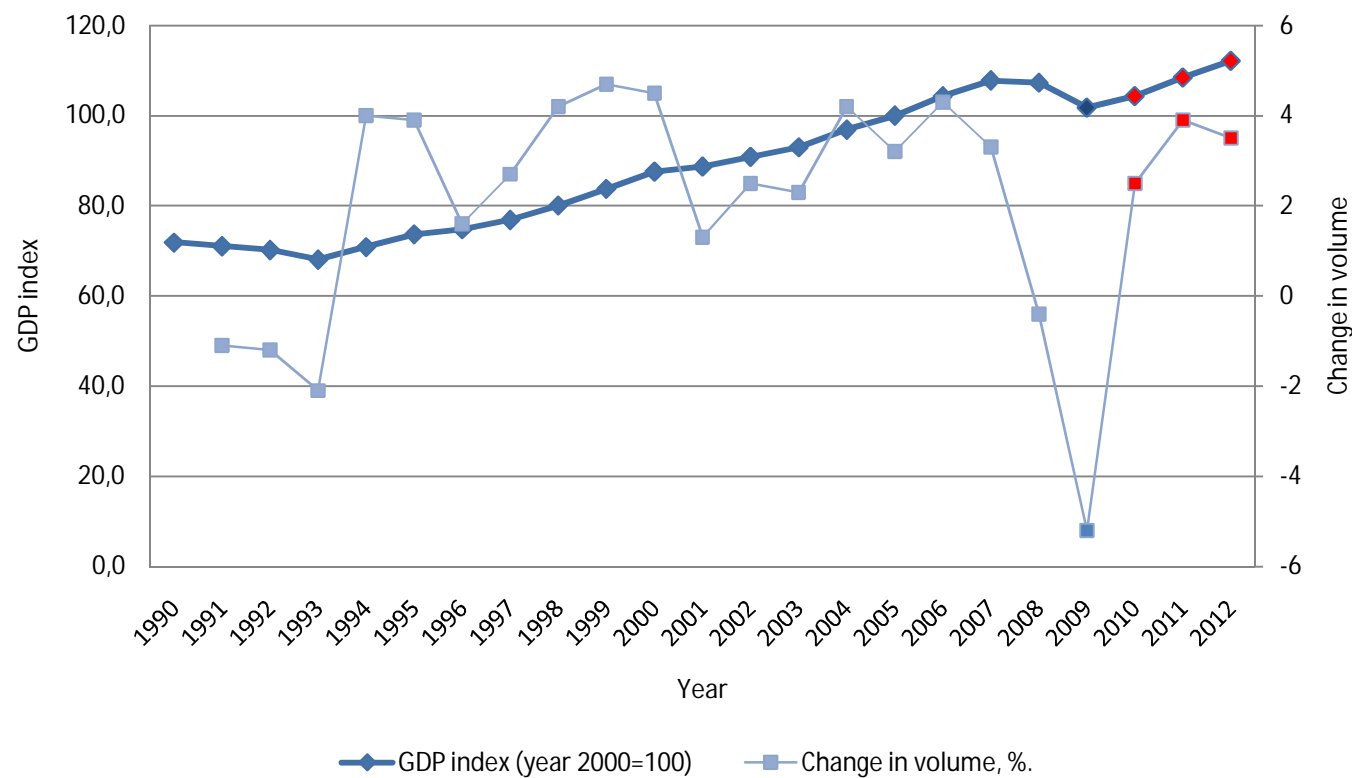
## Poverty: an absolute relative concept

The concept, the crisis, and the consequences

Björn Halleröd  
Dept. of Sociology  
University of Gothenburg



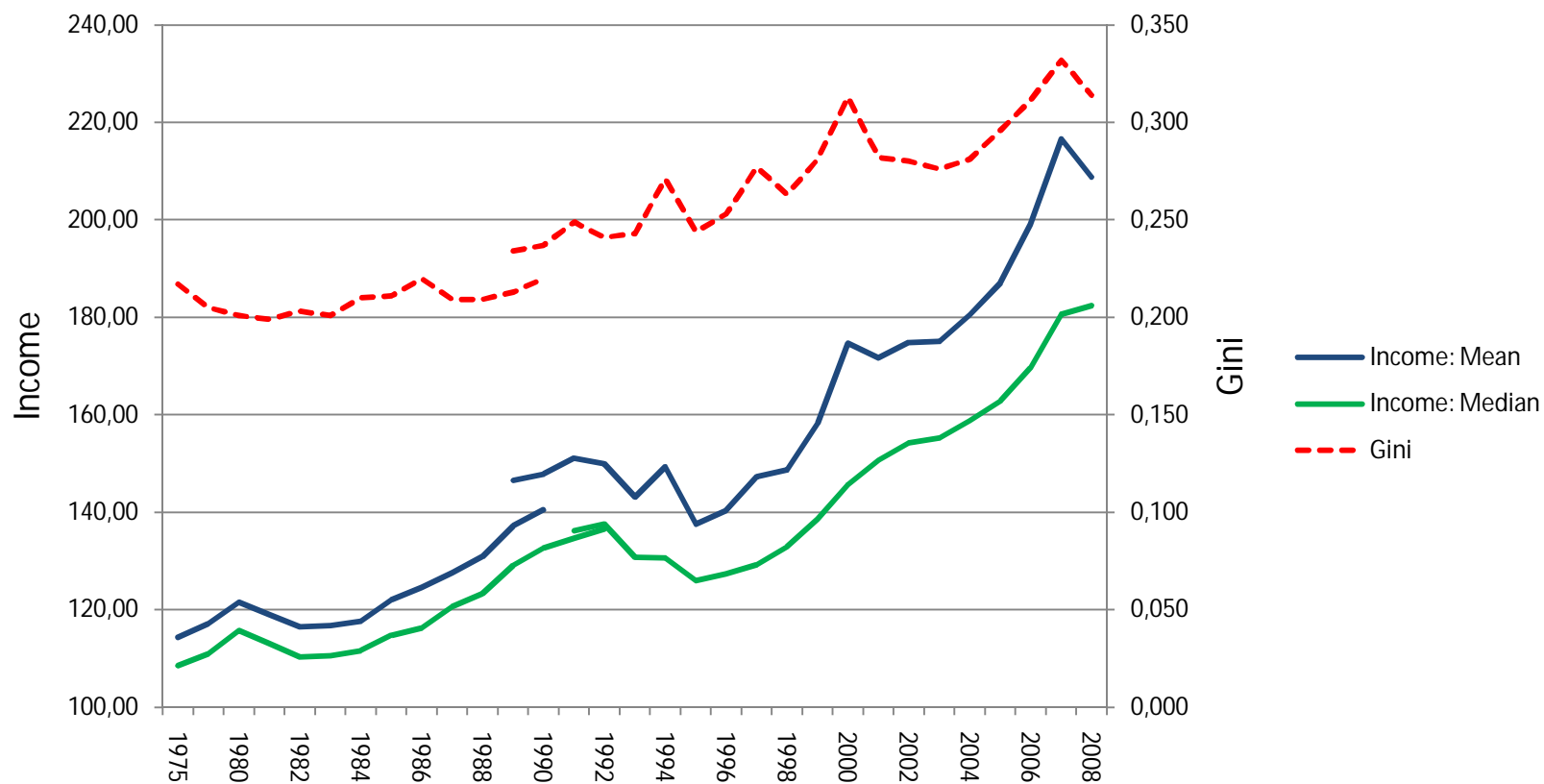
GDP index (year 2000 = 100) and GDP change (per cent) 1990 – 2012. Figures for 2010 – 2012 are based on estimates



Source: Statistics Sweden and Government Offices



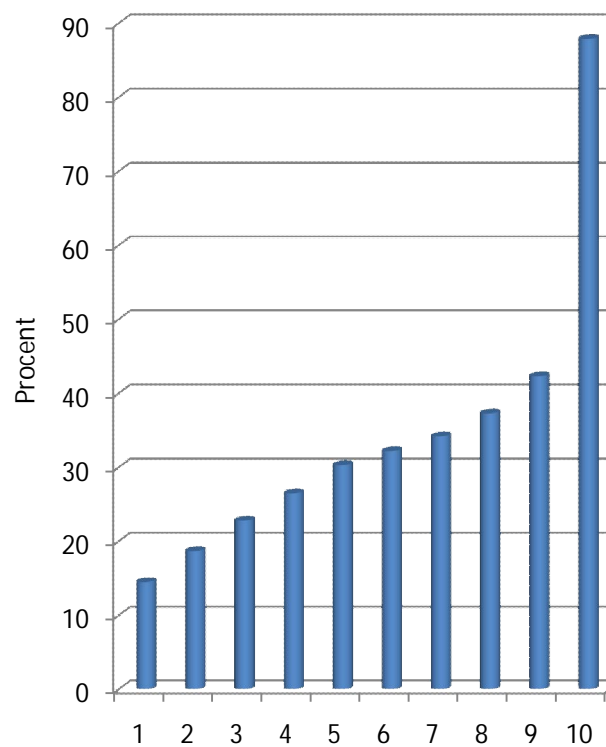
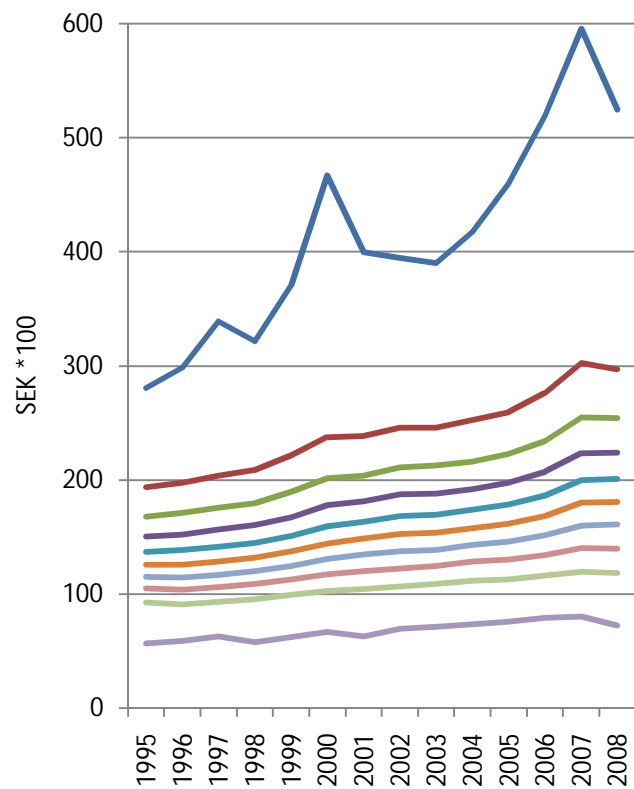
Mean and median equivalent disposable income and gini coefficient 1975-2008 (2007 prices).



Källa: Statistics Sweden

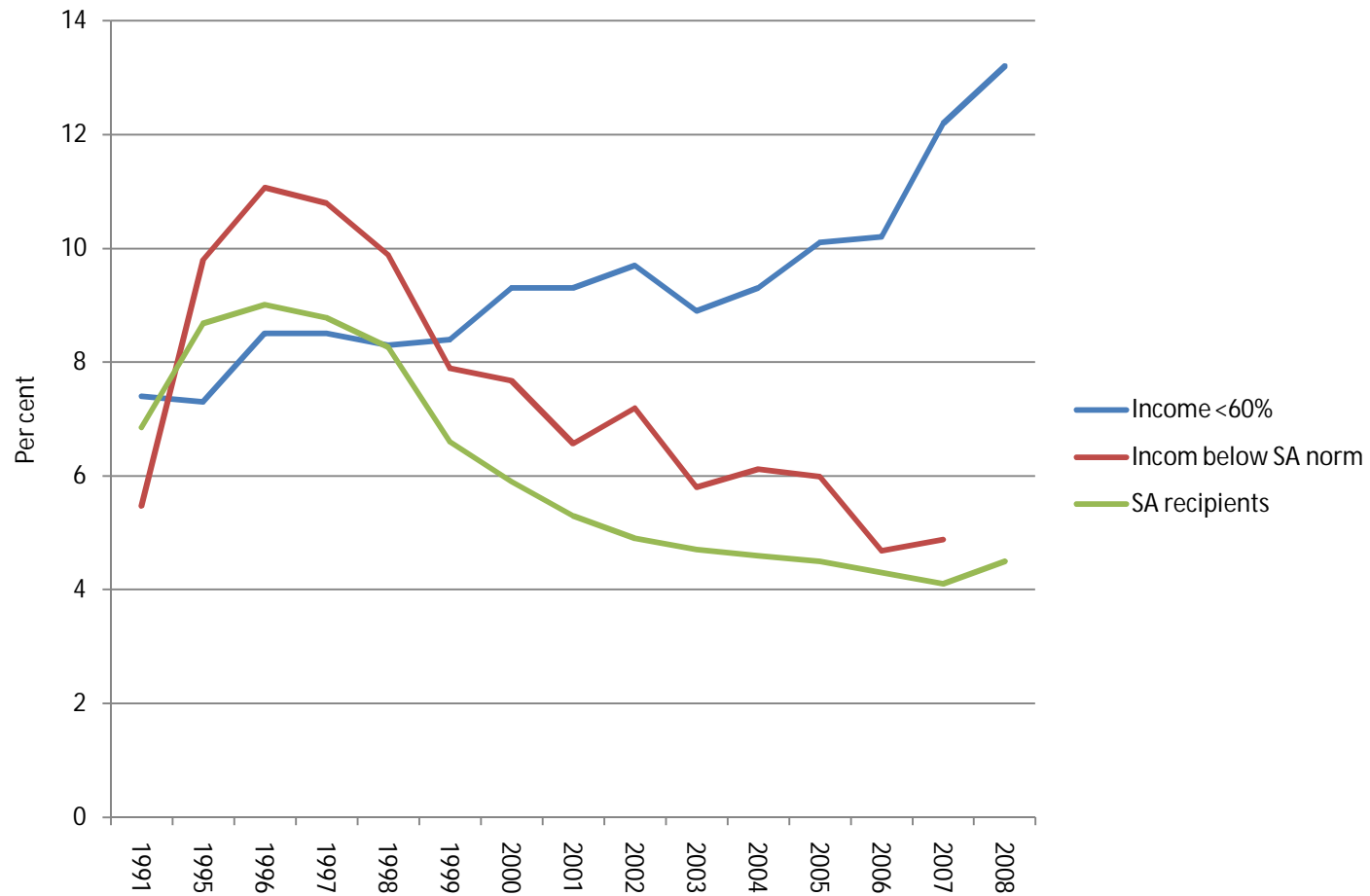


Mean income divided by income deciles 1995 – 2008 and income change (per cent) between 1991 and 2007.





Poverty rates according to three different operationalizations (1991, 1995 – 2008)





## How can we understand poverty?

- The poor are those who, because of insufficient access to economic resources, have an **unacceptably** low level of consumption of goods and services.
- Individuals, families and groups in the population can be said to be in poverty when they lack the resources to obtain the types of diet, participate in the activities and have the living conditions and amenities which are customary, or at least widely encouraged or approved, in the society to which they belong (Townsend 1979: 31).



## Absolute, relative or maybe both absolute and relative

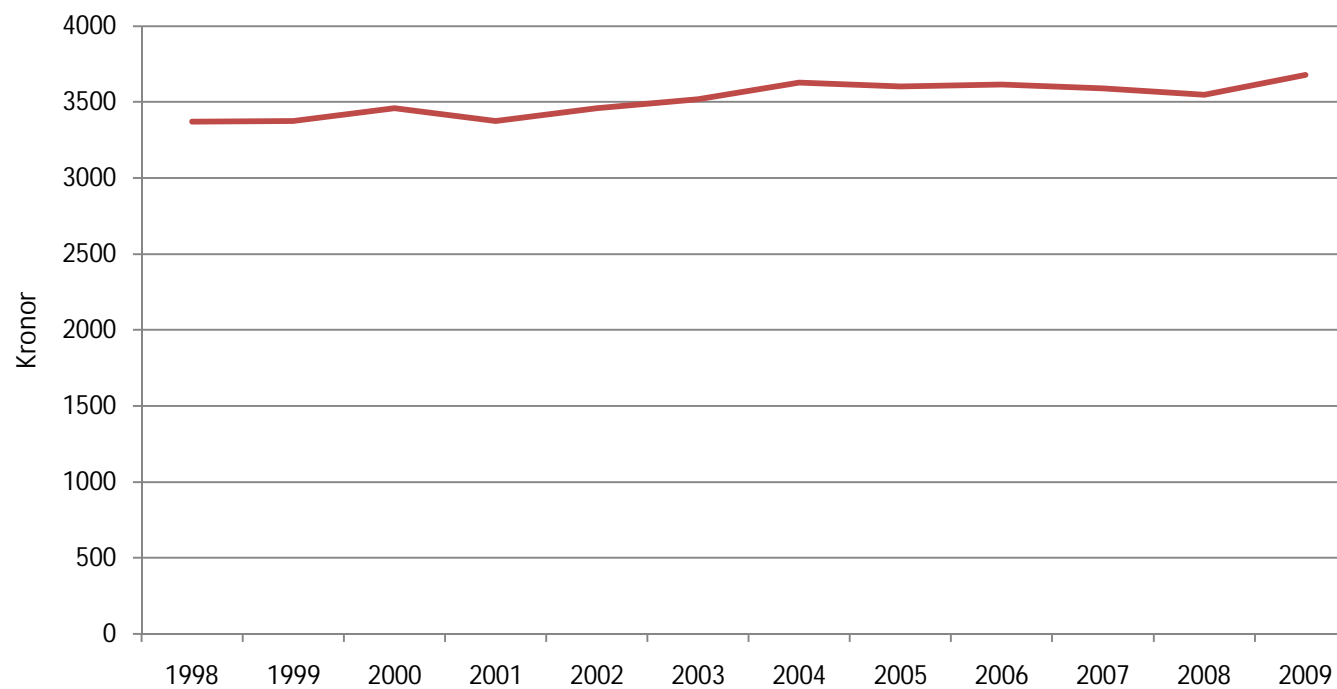
- Functionings are absolute
- Resources are relative
- Resources need to be converted into capabilities that enables the maintenance of functionings that the individual has reason to value.



(A. Sen)



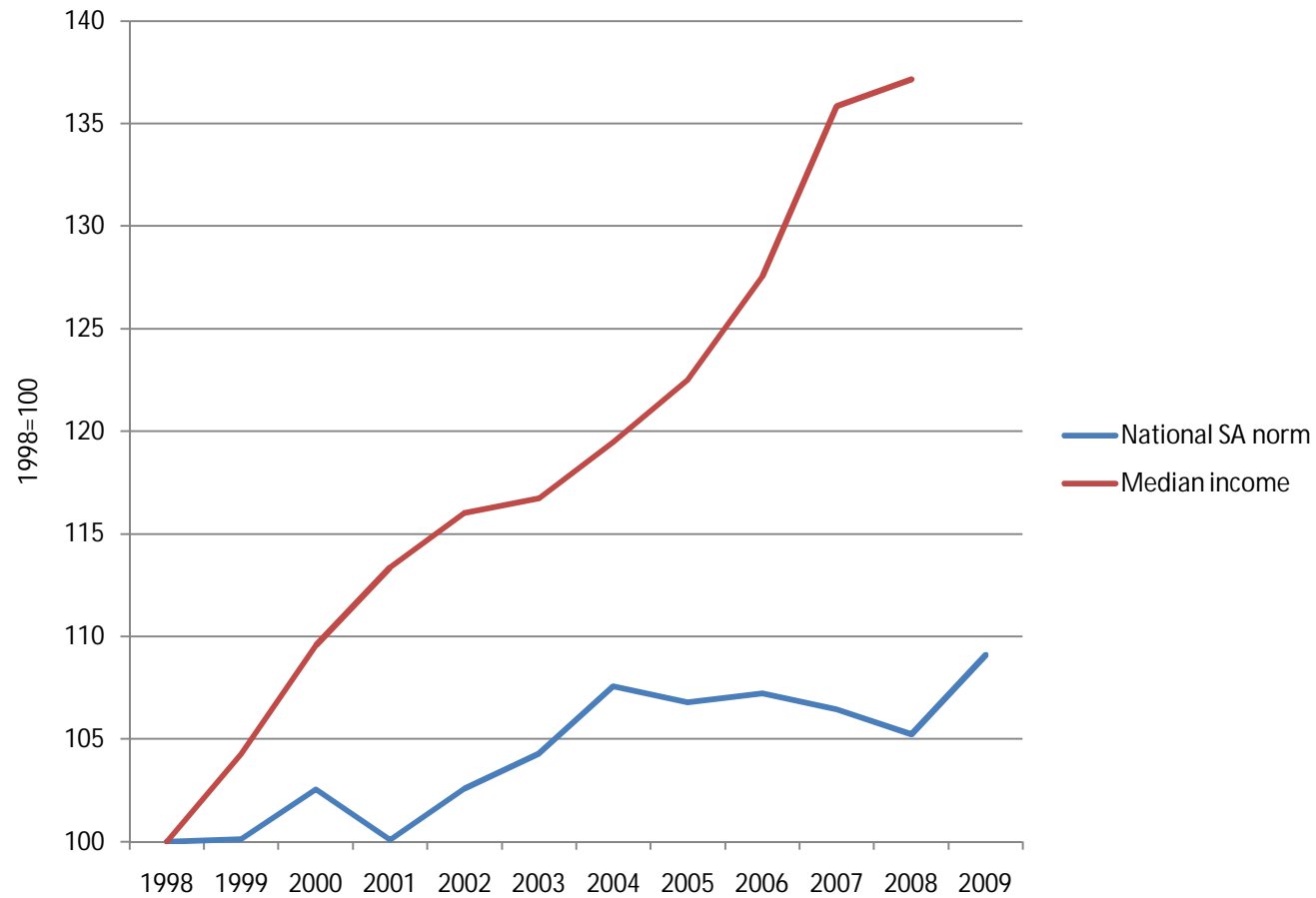
National norm for social assistance. Single adult household 1998 – 2009 (2009 prices).



Källa: Socialstyreslen

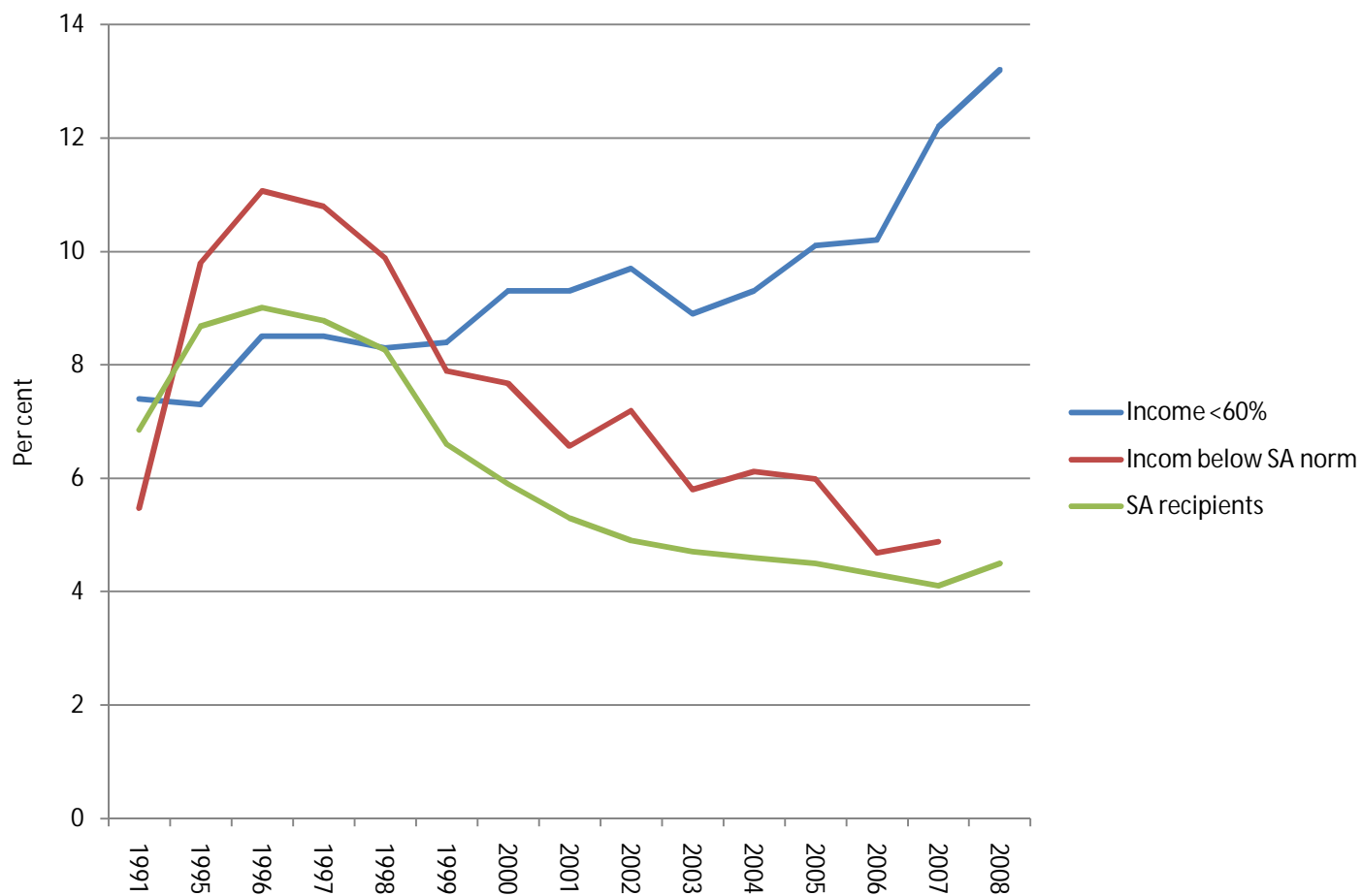


Relative changes of median income and the national norm for social assistance (1998 – 2009).



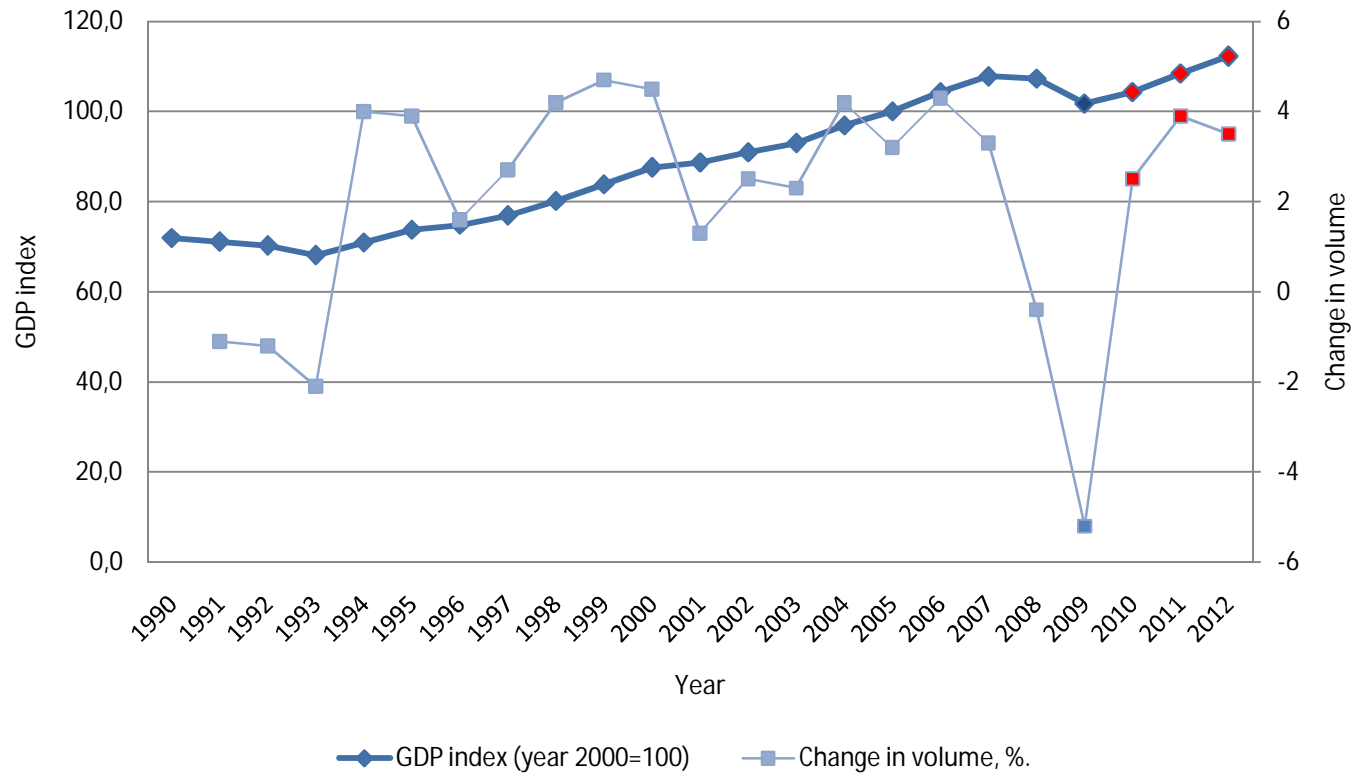


Poverty rates according to three different operationalizations (1991, 1995 – 2008)



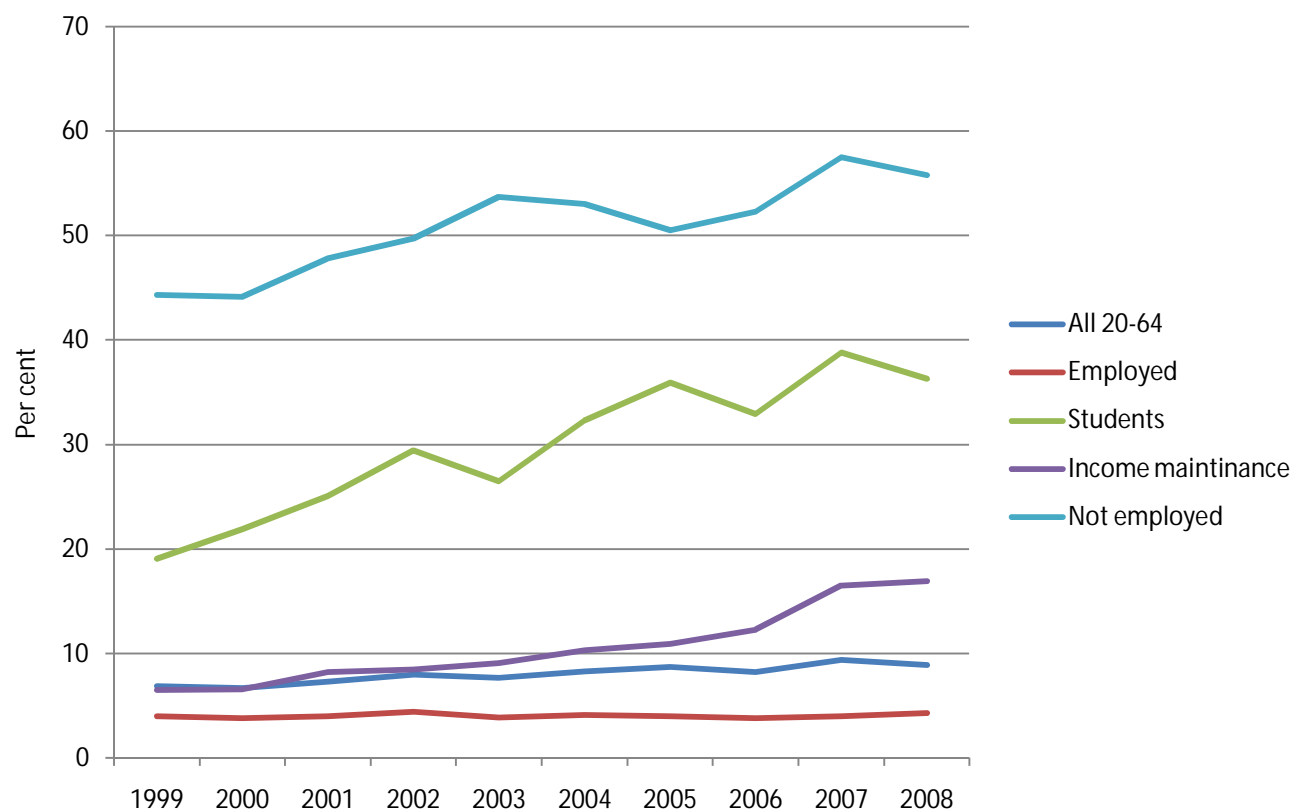


### Economic crisis - who pays the price?





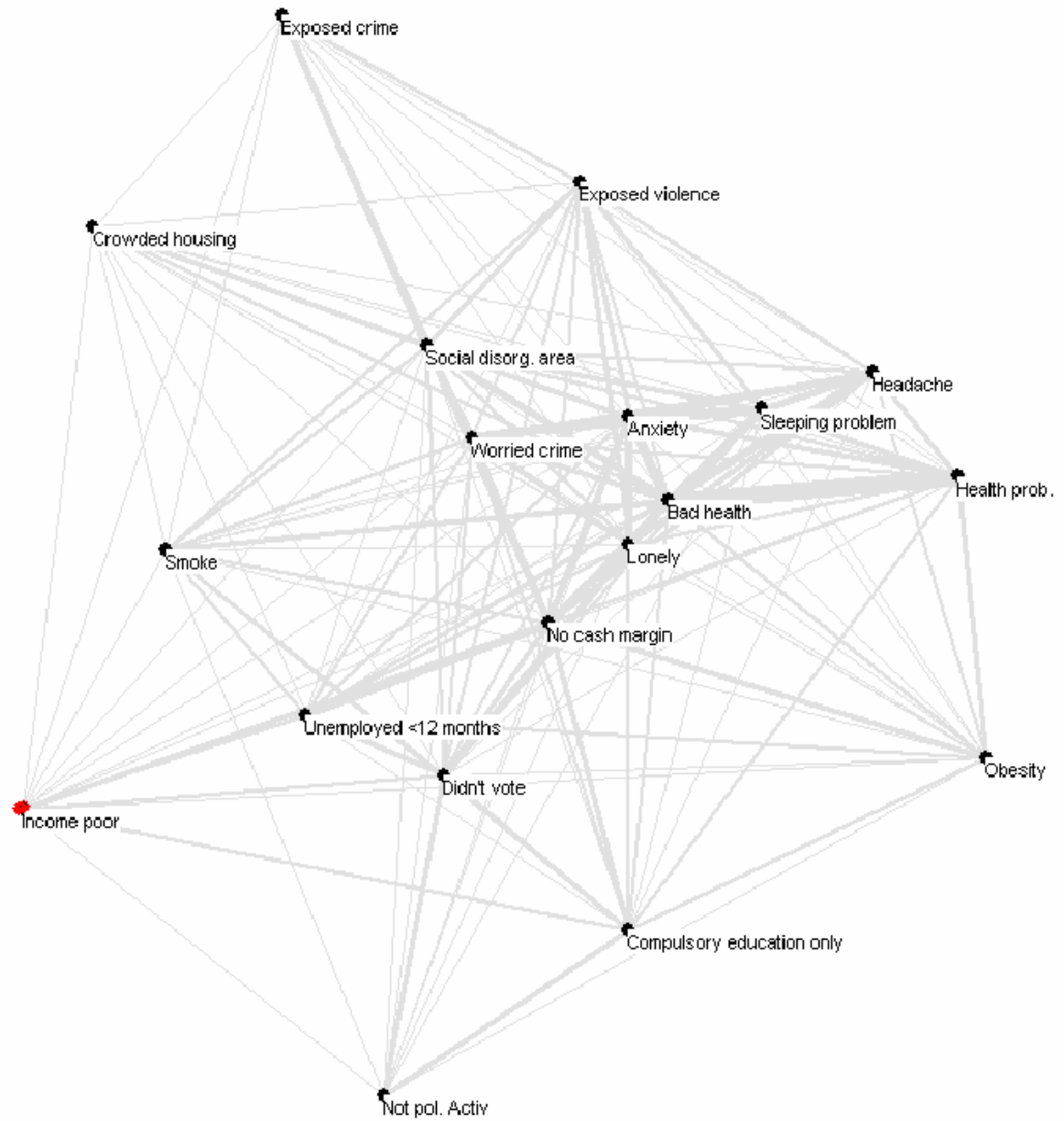
Relative poverty rates (<60%) divided by labour market attachment among 20 to 64 years old (1999 – 2008).

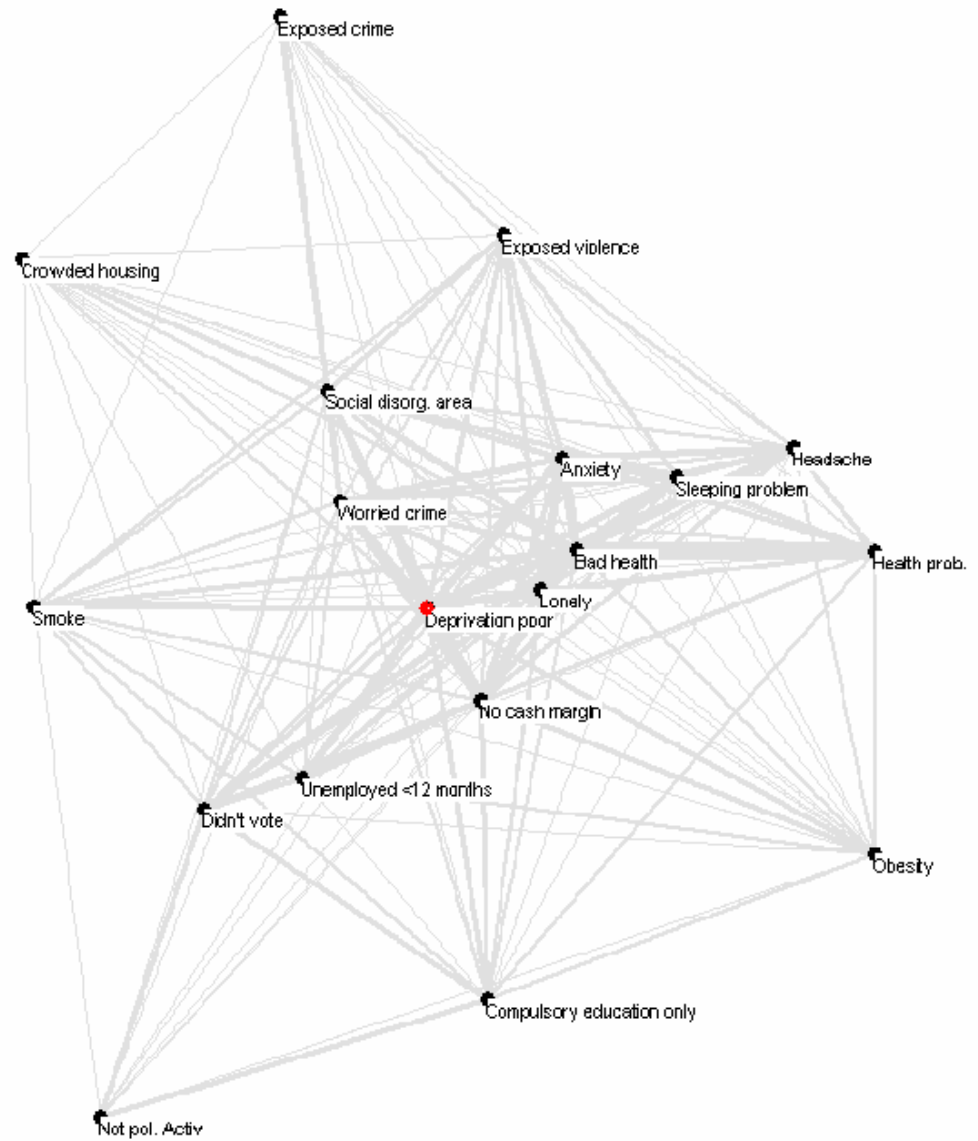




## Questions to be asked before the election

- To the government:
  - If the 'making work pay' policy fails, what then?
  - The return of the deserving and undeserving poor.
- To the opposition (i.e., social democrats):
  - Compared to last time (1994-2006); what will you do different this time?







Sambandet mellan inkomst och att tvingas avstå från konsumtion på grund av bristande resurser

